

## Unit C | Skilled Nursing | Private

598 sq. ft. | One Bedroom | One Bath

### All-Inclusive Pricing & Amenities

You will pay one rate for all your care while in Assisted Living and Memory Care. This easy All-Inclusive Pricing will allow you to budget more effectively and never worry about hidden fees or add-ons every month.

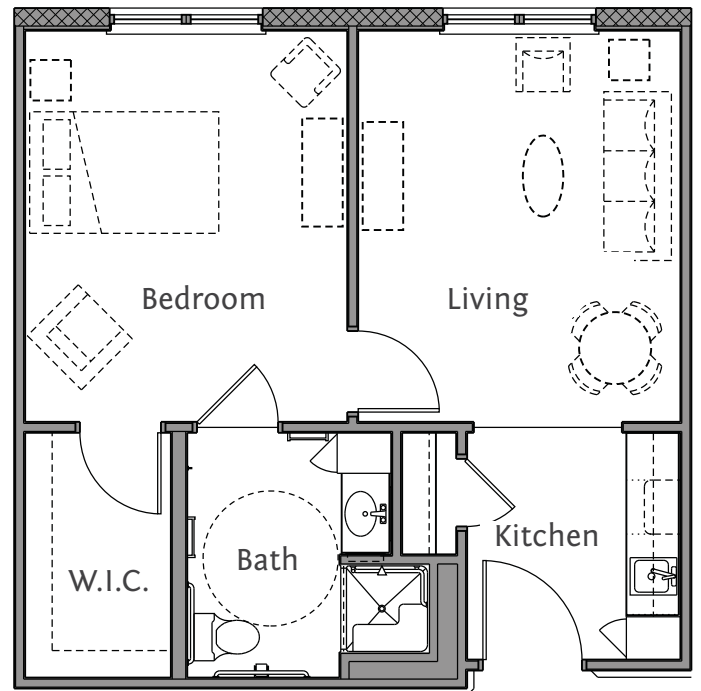
---

### Brightwater Advantage

- All-Inclusive Pricing in Assisted Living and
- Alzheimer's & Dementia Care
- 24/7 on-site registered nurse
- Pet friendly community
- Daily social calendar to stimulate the brain and body
- 24-hour emergency response system
- Evening campus security
- Concierge Service

### Features and Amenities

- Apartments - studio to two-bedrooms w/ private bathrooms
- Wellness Center w/ indoor, heated therapy pool
- Salon & Spa
- The Brightwater Dining Experience
- Full Service Bar
- Anytime snacks
- Courtyards, libraries and gathering rooms
- Maintenance-free living
- All utilities including cable and Wi-Fi



**BRIGHTWATER**

3 of 4  
Skilled Nursing Floorplans

101 Brightwater Drive  
Myrtle Beach, SC 29579  
Phone: 843-903-8300  
Brightwater-Living.com